

Rocscience Installation Guide - UPC License

This manual describes the procedure to install Rocscience Software Suite connected to the UPC academic license.

The license server can be reached if you are connected to the UPC Network (both cable and wireless connection). If you are connecting from abroad, first you need to set up and connect the remote connection, service called UPCLink, following [these instructions](#).

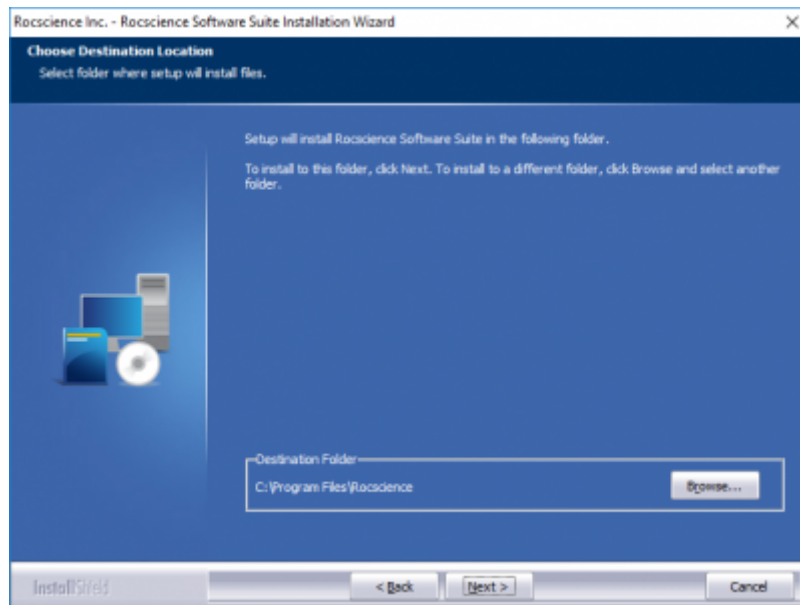
Installation

First you have to download the installation file from [this link](#). Once you downloaded it, extract the zip file and access to the folder 'Step 2 - Rocscience Software Suite'. Inside this folder there is the file **rss1082j11s.exe**, that you have to execute.

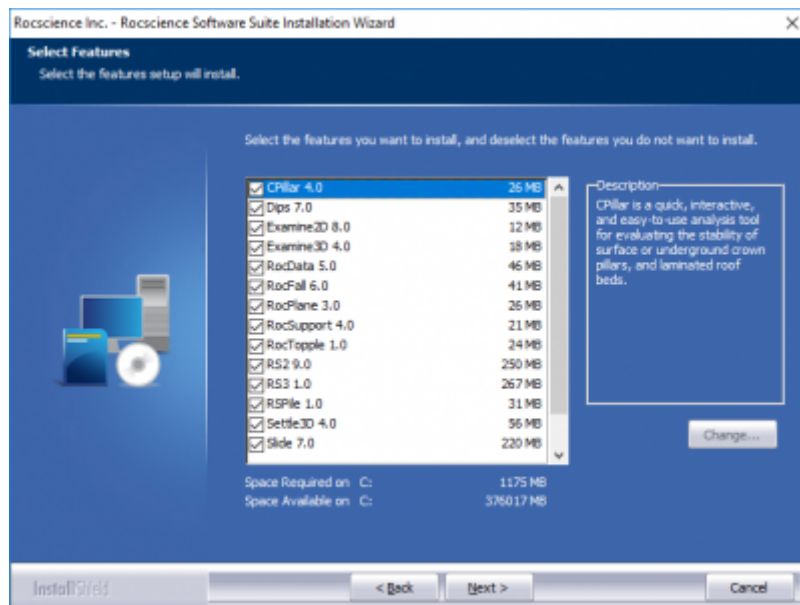
It will pop up the following window:



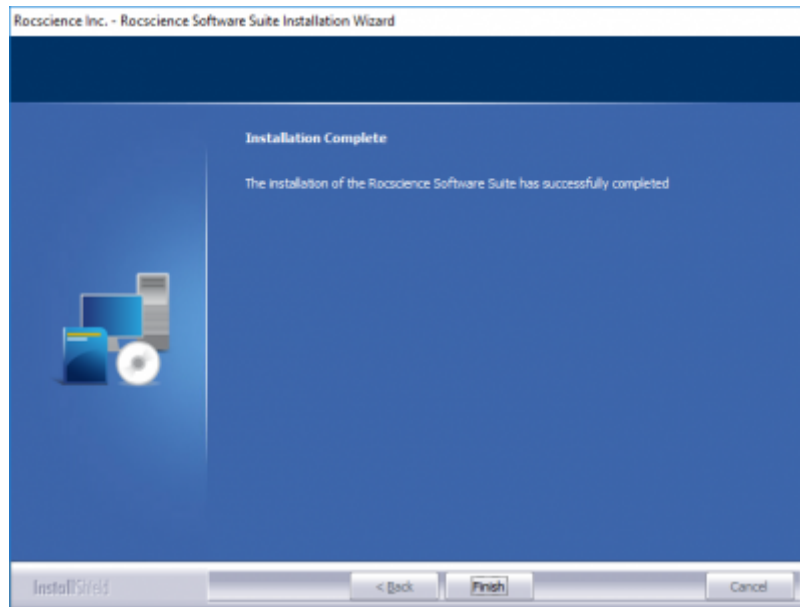
Press the **Next** button, then in the next window press **Yes**. Then you will see a window, where you will be able to choose where to install the program, you can leave as it is and just click the **Next** button, the window will look like the following picture:



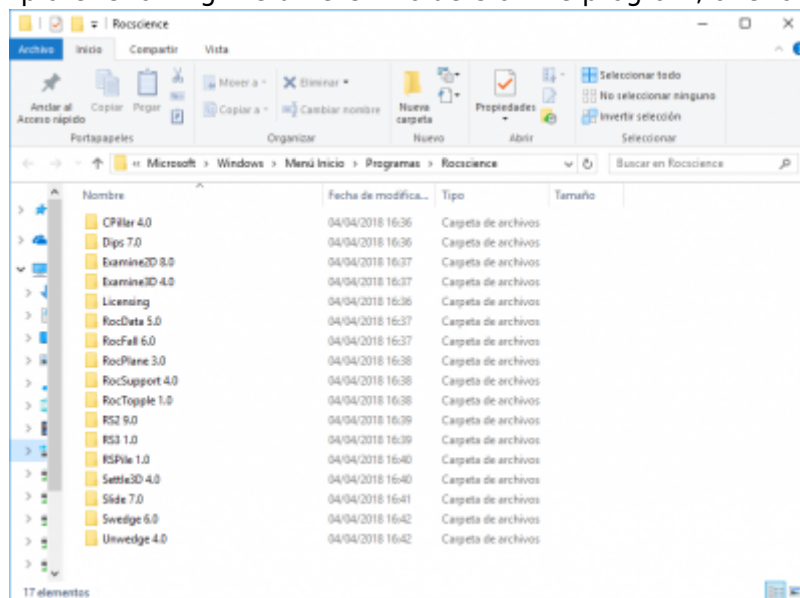
Then it will ask which features you want to install, all of them are selected as default so you can just click the **Next** button.



The installation process will start by installing the different components your computer needs for the program's functionation. Click **Next** whenever it is asked until the window showed in the next picture:



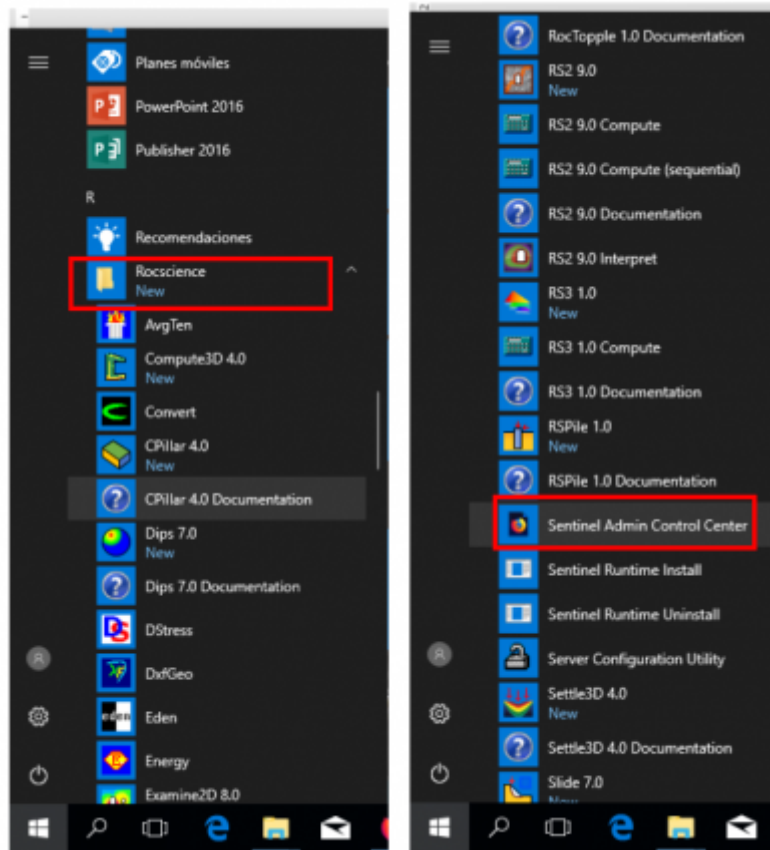
Click the **Finish** button, the window will close as the installation will have finished and it will open a new one in the File Explorer showing the different folders of the program, one for each feature.



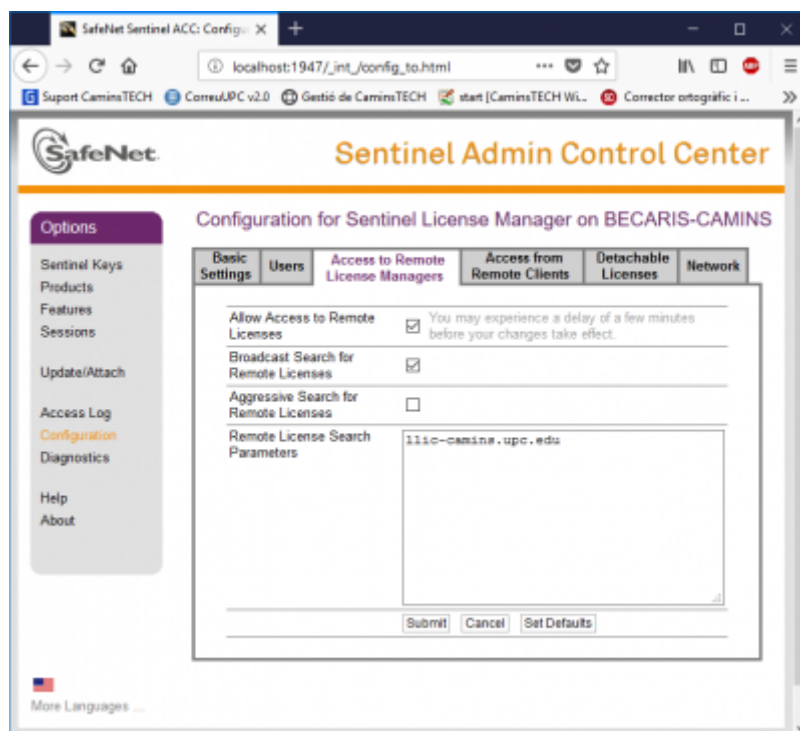
Configuration

If your computer is not connected to a UPC network you will have to connect the UPCLink Service now.

Go to the [Rocsience folder](#) and select the **Sentinel Admin Control Center** as shown in the following picture:

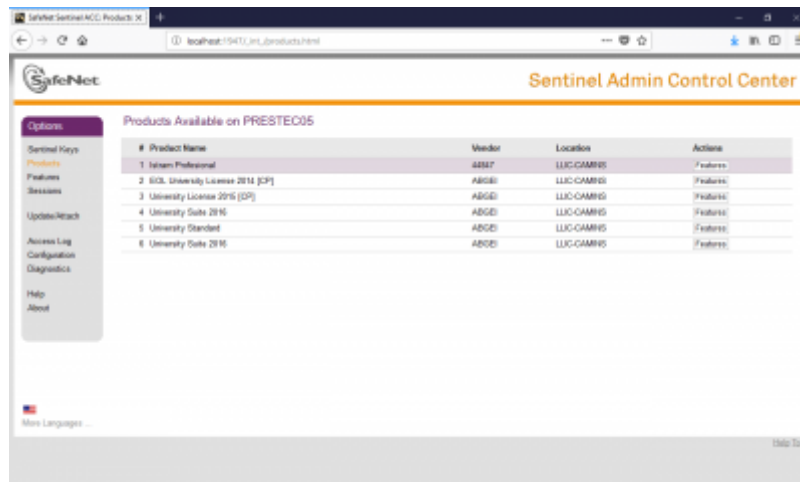


In the left pane click on **Configuration** and then select the **Access to Remote License Managers** tab. Check the **Allow Access to Remote Licenses** and the **Broadcast Search for Remote Licenses** checkboxes. And type *llic-camins.upc.edu* on the **Remote License Search Parameters** field. Finally press the **Submit** button.



In the left pane click on **Products**. If a license has been found, you will see the license in the product

list. It might take a few minutes for the license server to show up. The product list has to look like this:



Once you see it, you will be able to use the software included in the Rocscience package.

[howto](#)

From: <https://wiki.caminstech.upc.edu/> - **CaminsTECH Wiki**

Permanent link: https://wiki.caminstech.upc.edu/doku.php?id=public:rocscience_product_installation_guide

Last update: **2020/06/16 11:34**

